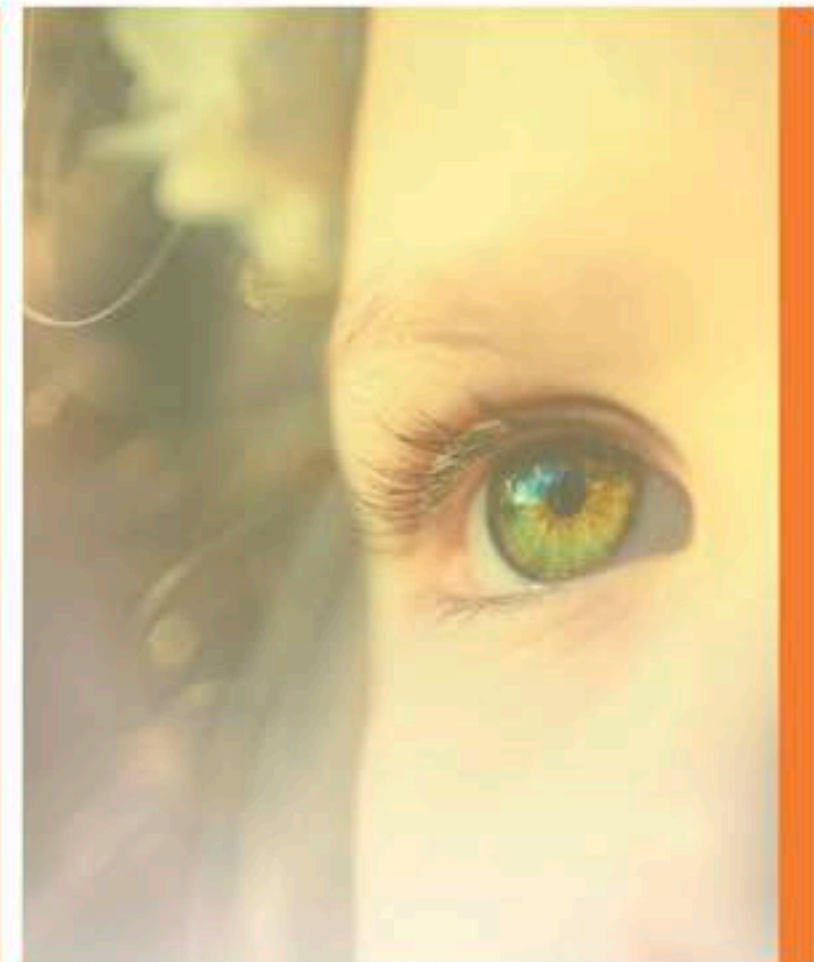


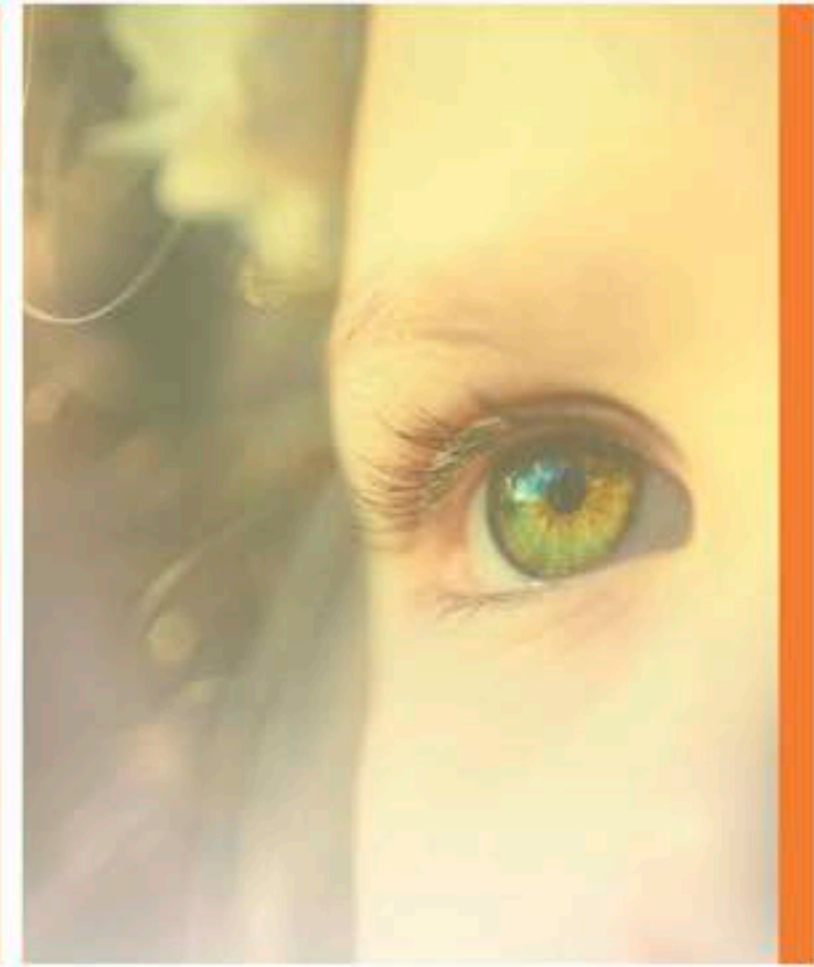


ORANGE COUNTY



INTERNATIONAL DRIVE PEDESTRIAN OVERPASS
ANALYSIS AND OVERPASS CONCEPTUAL DESIGN STUDY
PROJECT ADVISORY GROUP MEETING #1

HHCP&AVCON
A JOINT VENTURE

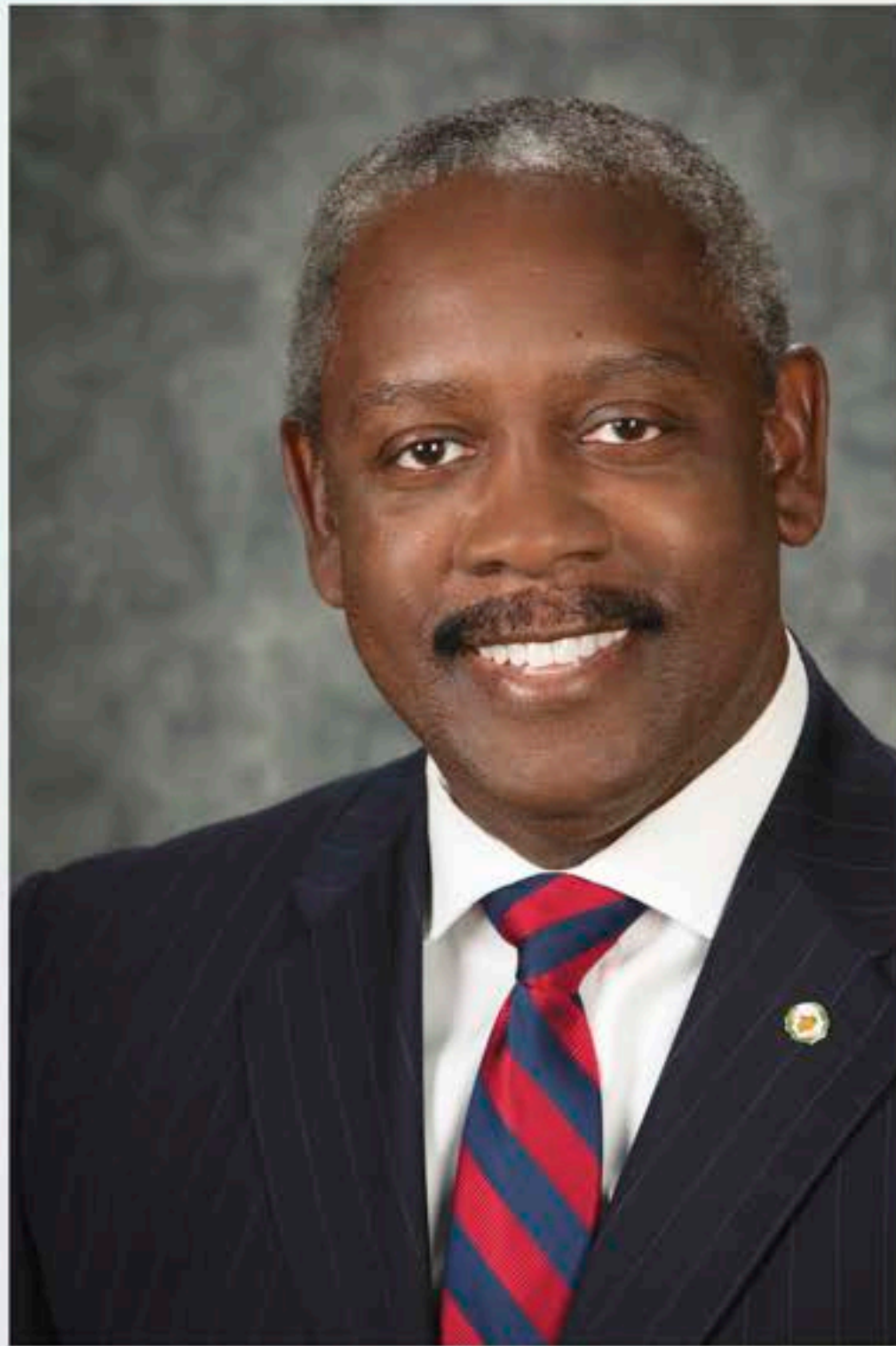


Meeting Number One

Introduction of Participants



HHCP&AVCON
A JOINT VENTURE



Jerry L. Demings
Orange County Mayor



Victoria P. Siplin
District 6 Commissioner



Project Advisory Group Meeting Objectives

Meeting Number One

- Introduction of Participants
- General Overview of Project
- Initial Comments from Group Members

Meeting Number One

Introduction of Participants
General Overview of Project
Initial Comments from Group Members

Meeting Number Two

Presentation on findings of Existing Conditions
Discussion of General Bridge Features
Ramps, Stairs Elevators, etc.
Comments from Group Members

Meeting Number Three

Presentation of Preliminary Bridge Concepts
Comparison of Aesthetics for Each Concept
Discussion of Right-of-Way and Access impacts
Discussion of Utility Impacts
Comments from Group Members

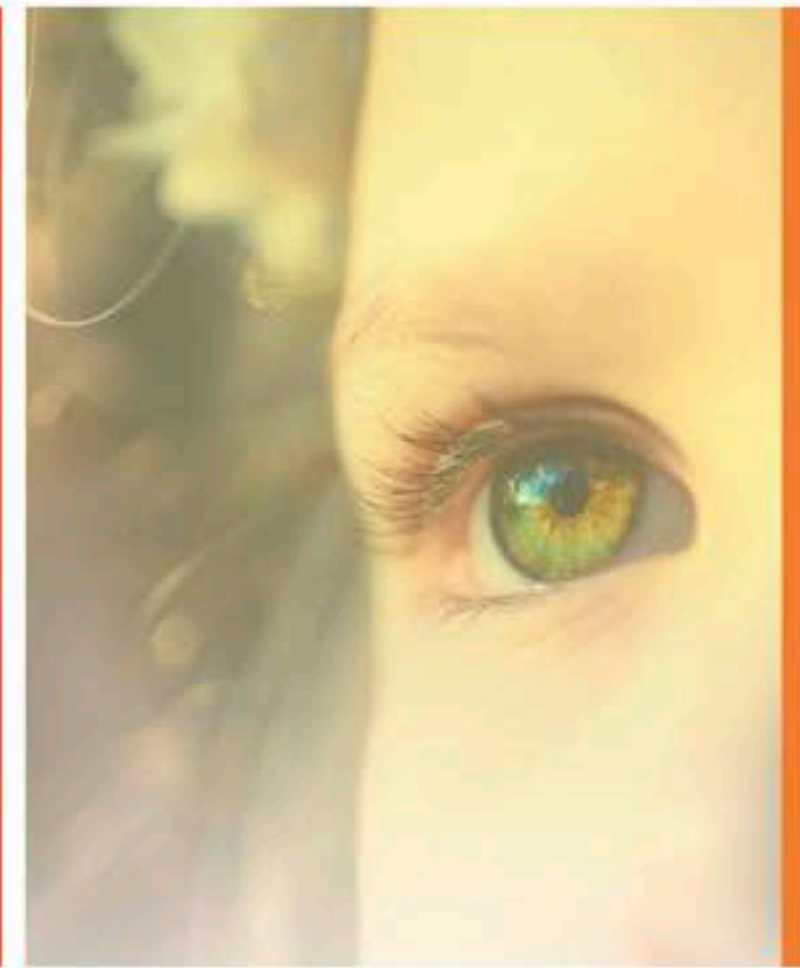
Meeting Number Four

Presentation of Refined Bridge Concepts
Discussion of Refined Aesthetics
Further Discussion of Right-of-Way and Access Impacts
Further Discussion of Utility Impacts
Final Comments from Group Members

Meeting Number Five

Presentation of Final Concept Plans for 3 Alternatives
Presentation on Evaluation Method and Rankings
Discuss Rankings and Determination of Preferred Alternative





Meeting Number One

Project Background



HHCP&AVCON
A JOINT VENTURE

District Goals

Stakeholder input was used to develop the District goals listed below.

CONNECTED - celebrate pedestrians by improving walkability, activating streets, and offering ample multimodal options.

Complete - enable a complete community by ensuring that a diversity of uses, including residential, can be accommodated in the District.

Authentic - reinforce community identity and authenticity by providing civic and gathering spaces featuring public art.

Prosperous - foster economic development by promoting and facilitating infill and redevelopment opportunities within the District.

Sustainable - promote efficient use of natural resources by incorporating green building practices and capitalizing on local assets.



Connected District



Walkability is rated
45 out of a possible
100 score

There are **0** bicycle
lanes in the district



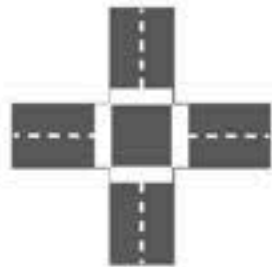
International Drive
has **58** miles of
vehicular lanes



There are currently
0 transit lanes



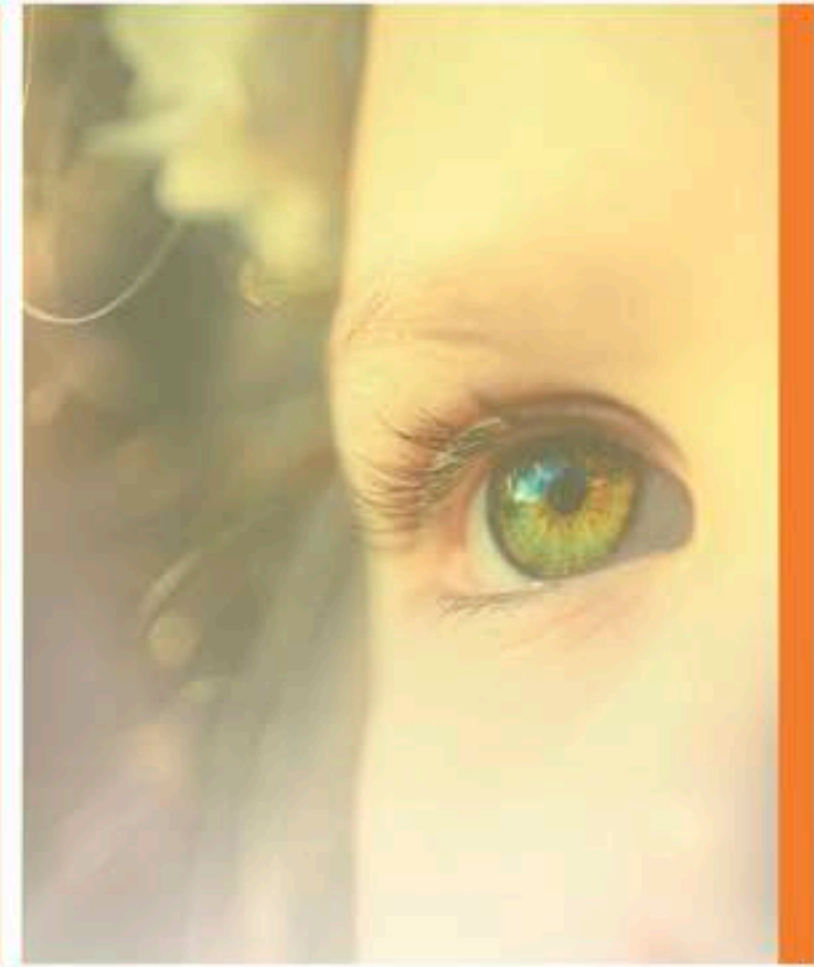
About **10%** of
pedestrians take
public transit



There are currently
12 intersections
per square mile

Complete District





Meeting Number One

General Overview of Project



HHCP&AVCON
A JOINT VENTURE

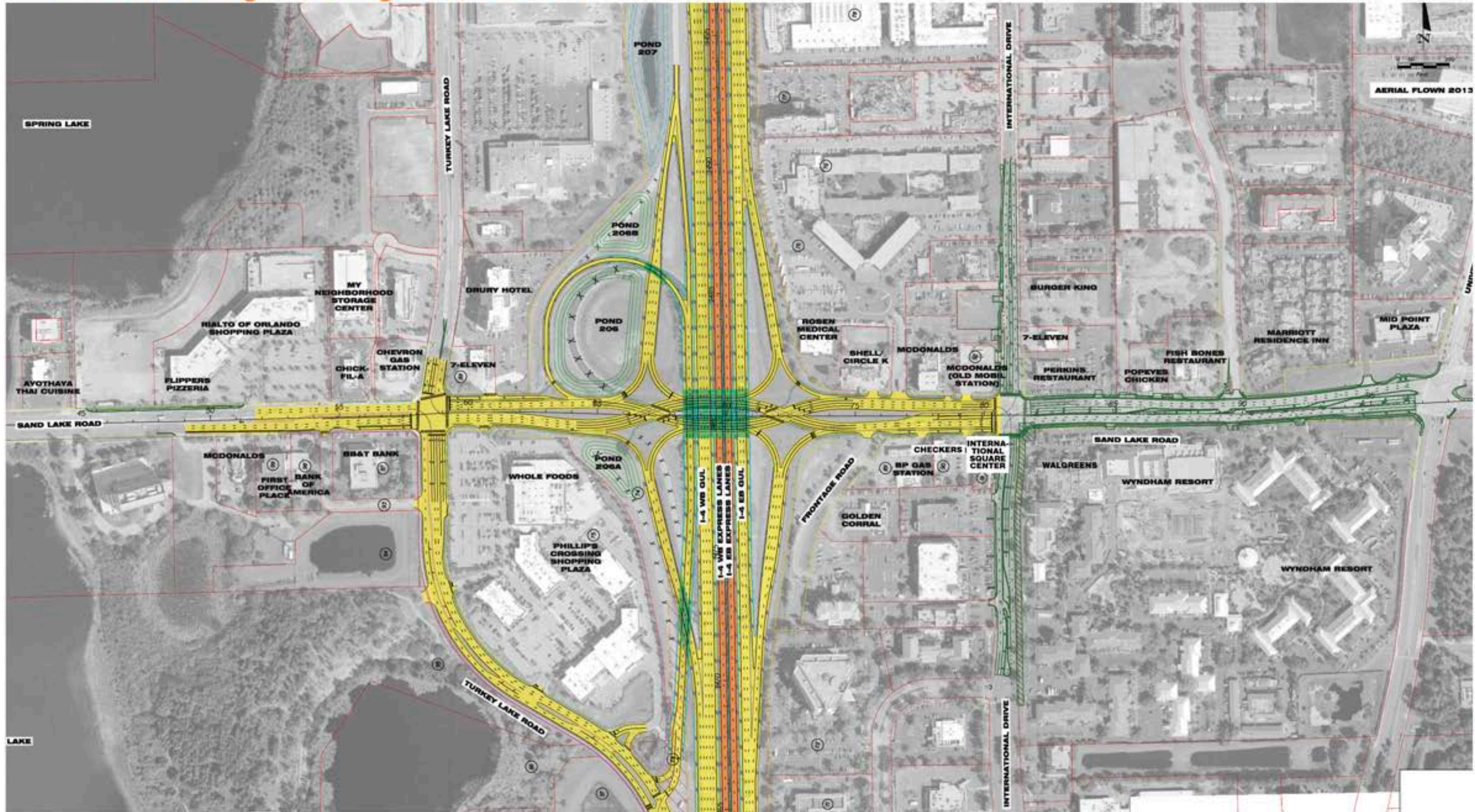
Previous Collaboration Meetings

Florida Department of Transportation (FDOT)

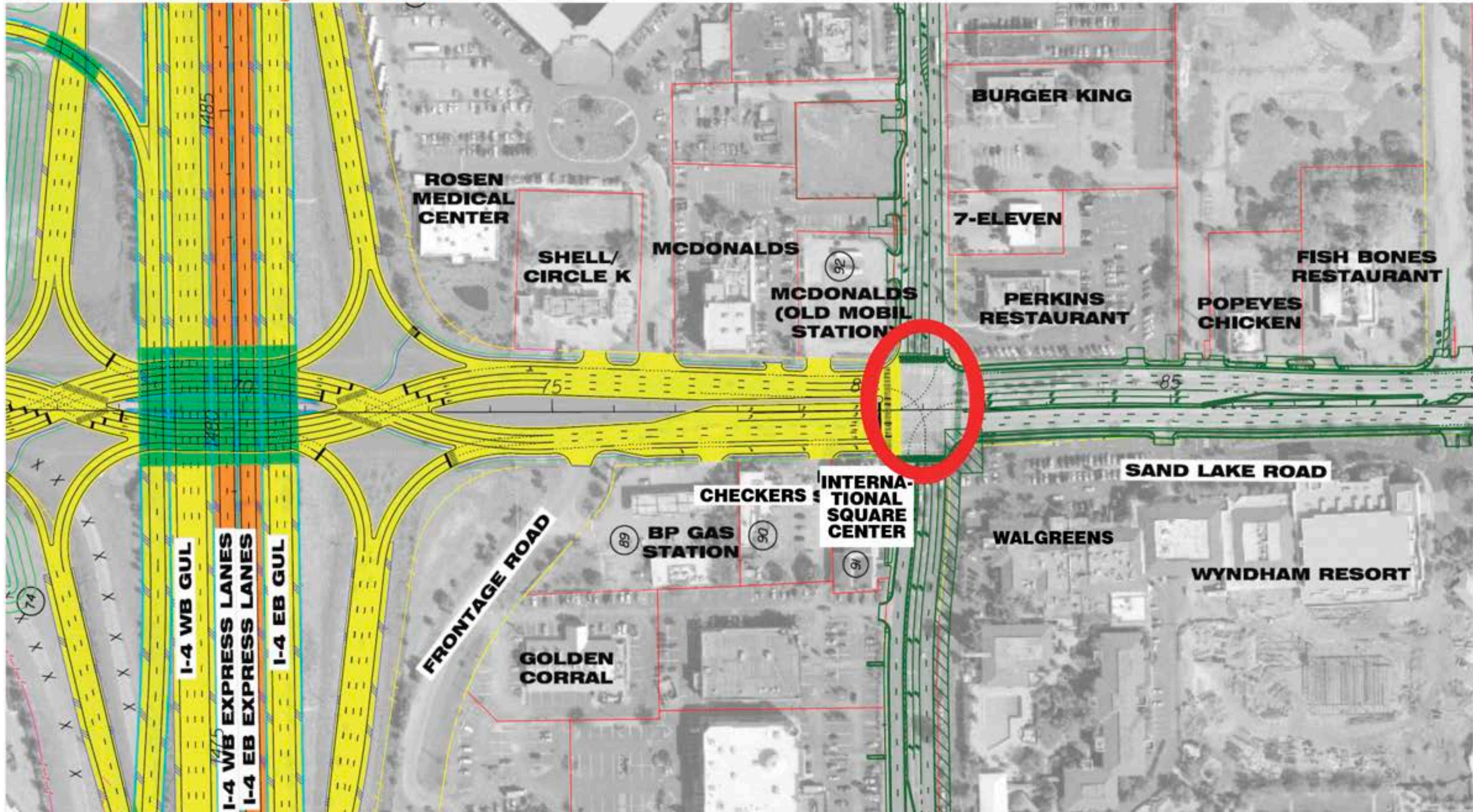
- General Overview of Project
- Letting for the Sand Lake Interchange Improvements is anticipated in 2023
- FDOT would need to approve eliminating on grade pedestrian crossing at intersection
- Coordinate visibility & any changes to signalization
- FDOT has regulations regarding visibility of billboards
- Selected design will require review & approval by FDOT



I-4 Interchange – Design Build 2023

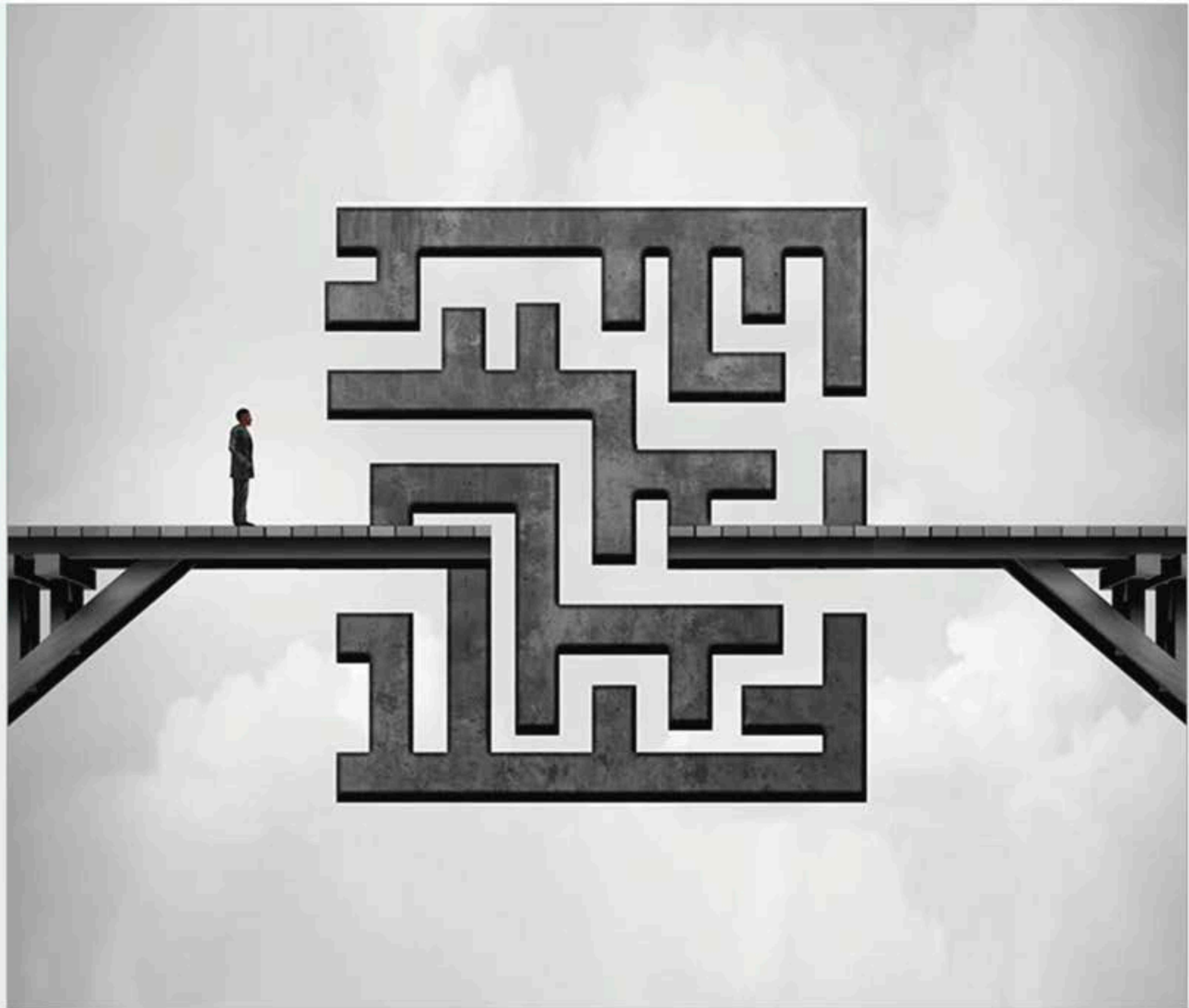


Pedestrian Bridge Location



Challenges

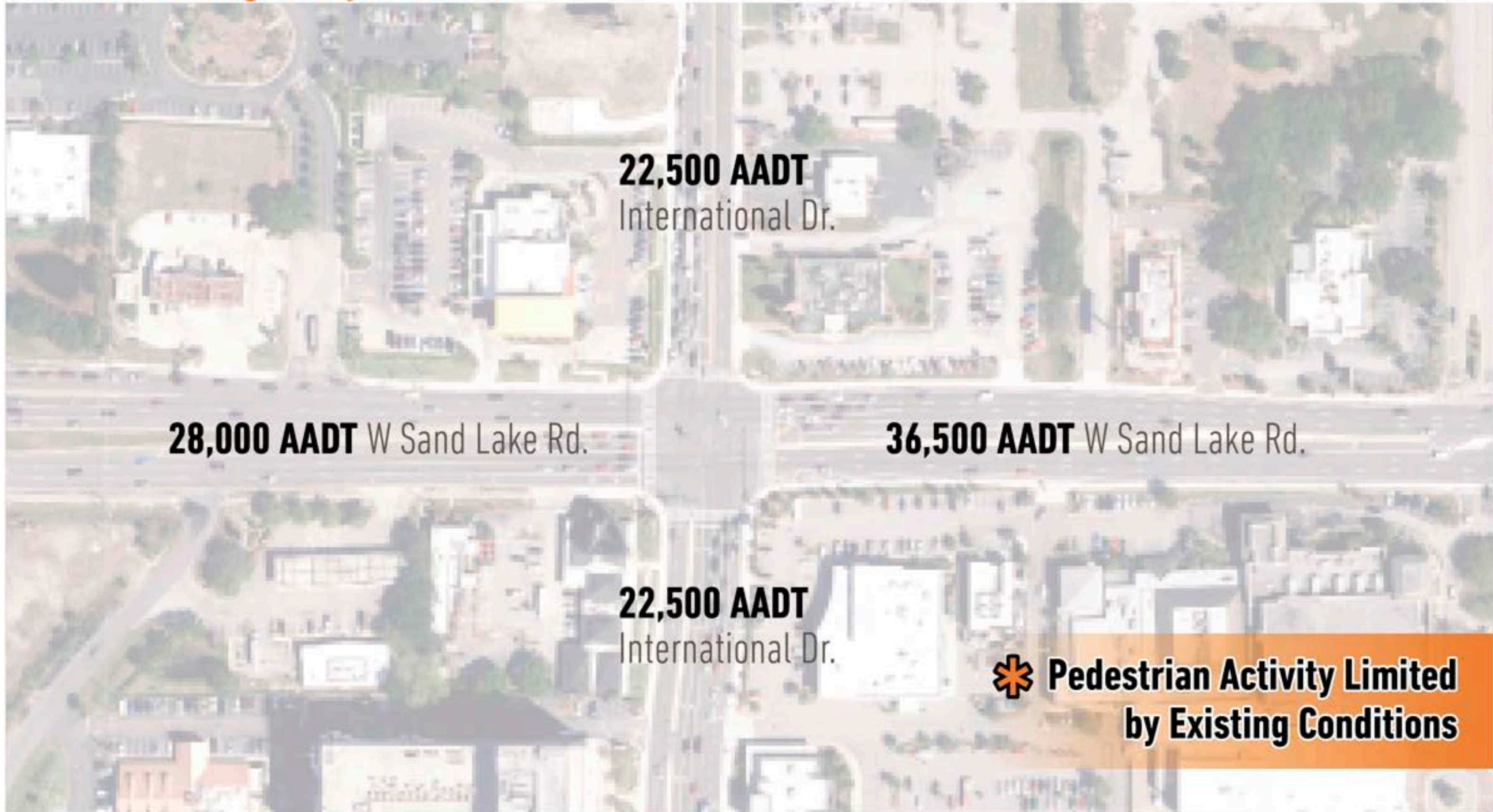
1. Utility Impacts
2. Right-of-Way Impacts
3. Access Impacts
4. Visibility Impacts
5. Traffic Speed Impacts
6. ADA Accessibility
7. Fire/Rescue Access
8. Fire/Rescue Parking
9. Pedestrian Use - Extra Walking Distance
10. Security



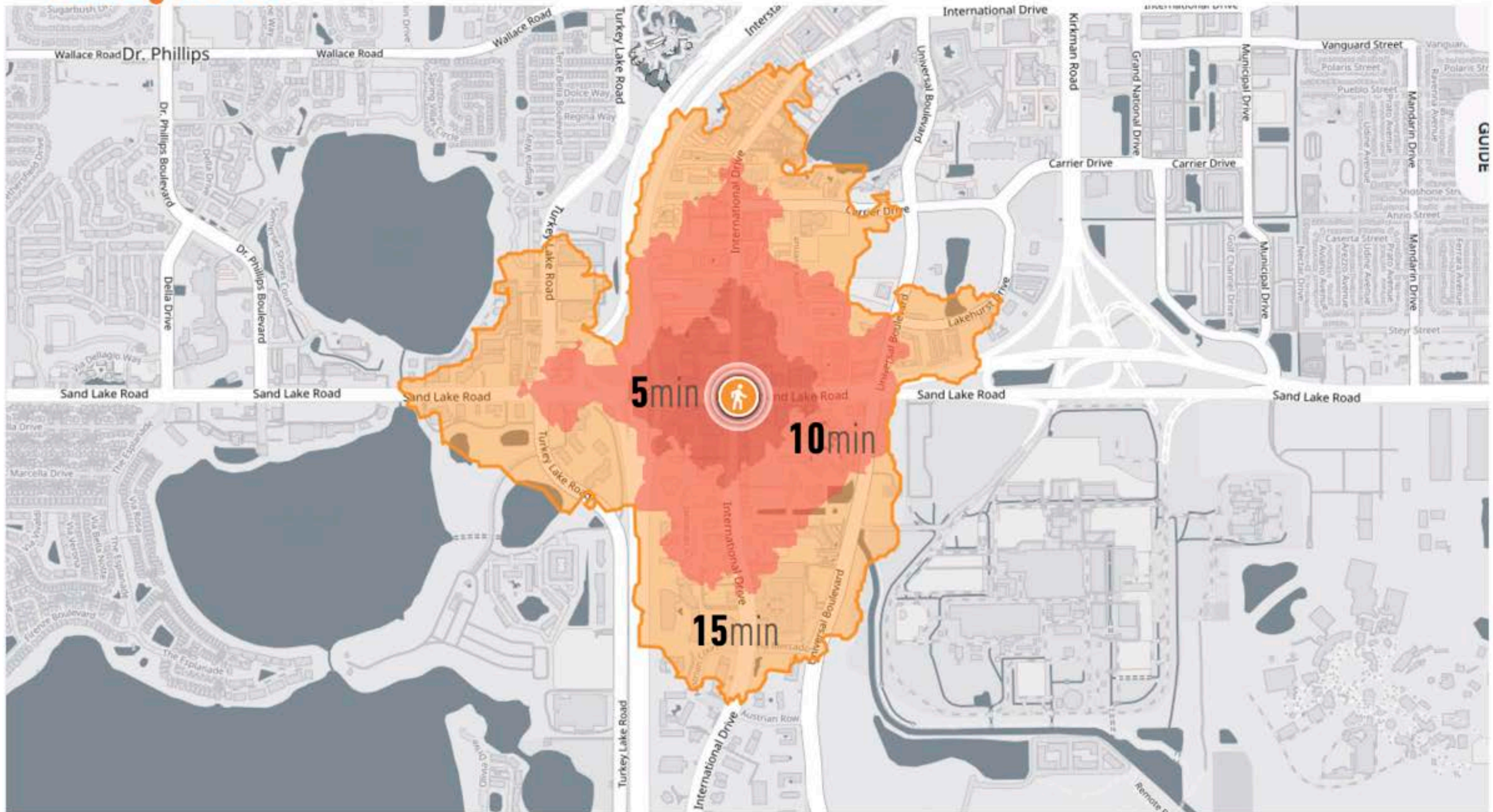
Adjacent Business and Lane Counts

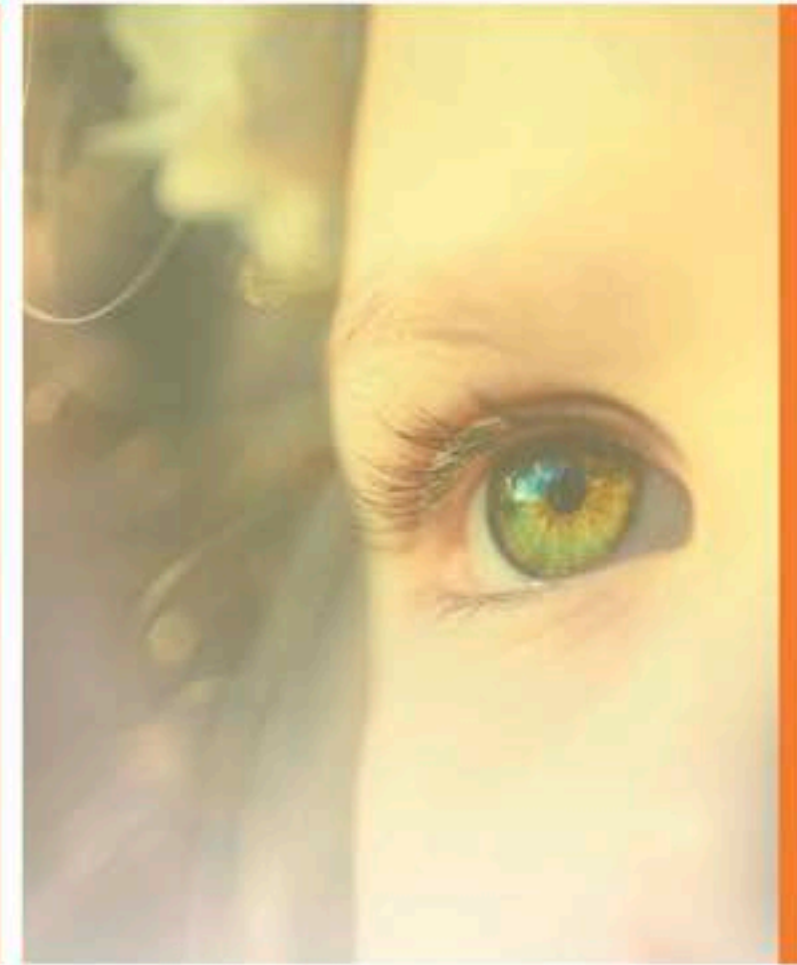


AADT - Average Daily Traffic Count



Walking Radius





Meeting Number One

Project Goals

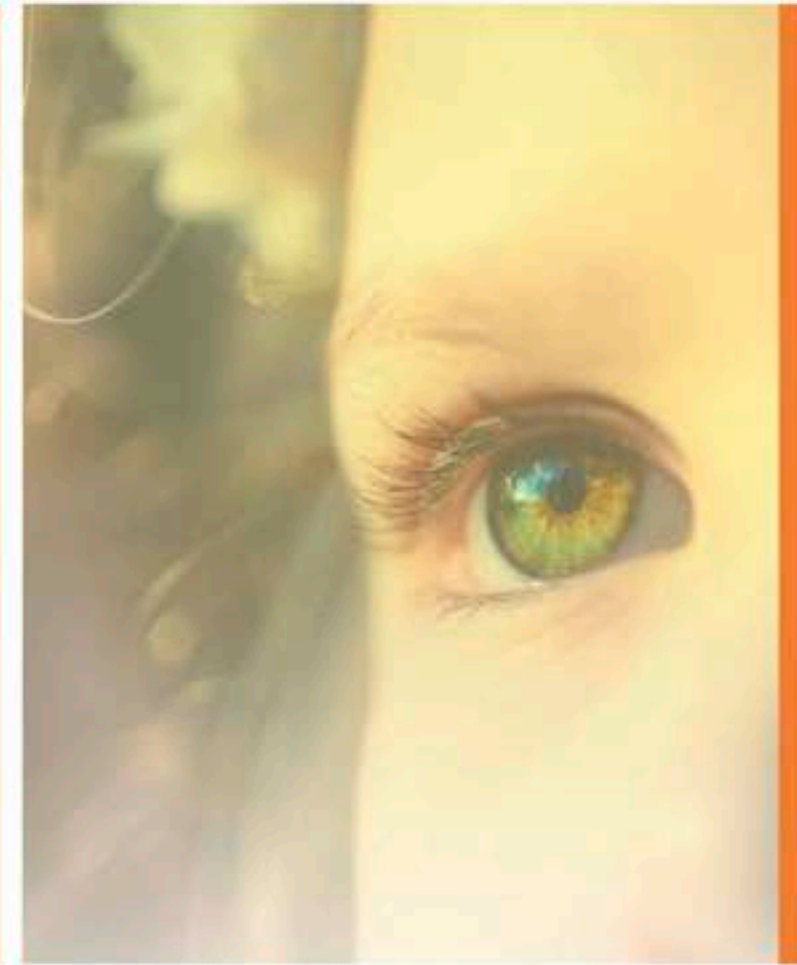


HHCP&AVCON
A JOINT VENTURE

Project Goals

1. Provide pedestrians **safe** crossing to all four intersection corners
2. **Iconic** Gateway to I-Drive Entertainment and Convention Center District
3. Improve Vehicular capacity at the intersection
4. Minimize impact on adjacent property owners
5. Minimize need to relocate existing utilities
6. Enhance **pedestrian** nature of the district
7. Provide ADA **accessibility** at bridge connections
8. Make the **experience** of using the bridge a positive, memorable, and Instagram-able
9. Utilize **lighting** to enhance the experience and safety of the bridge at night





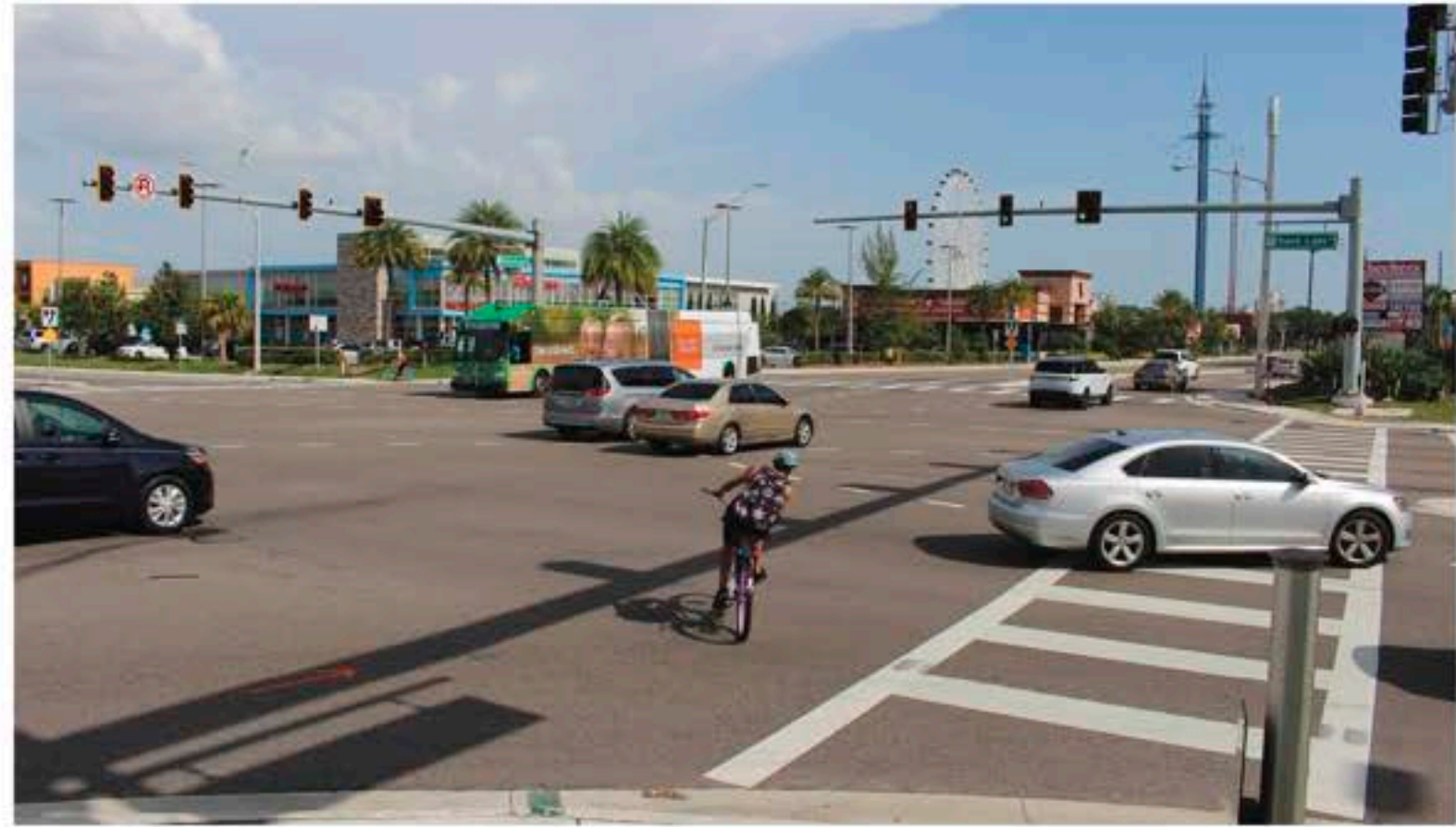
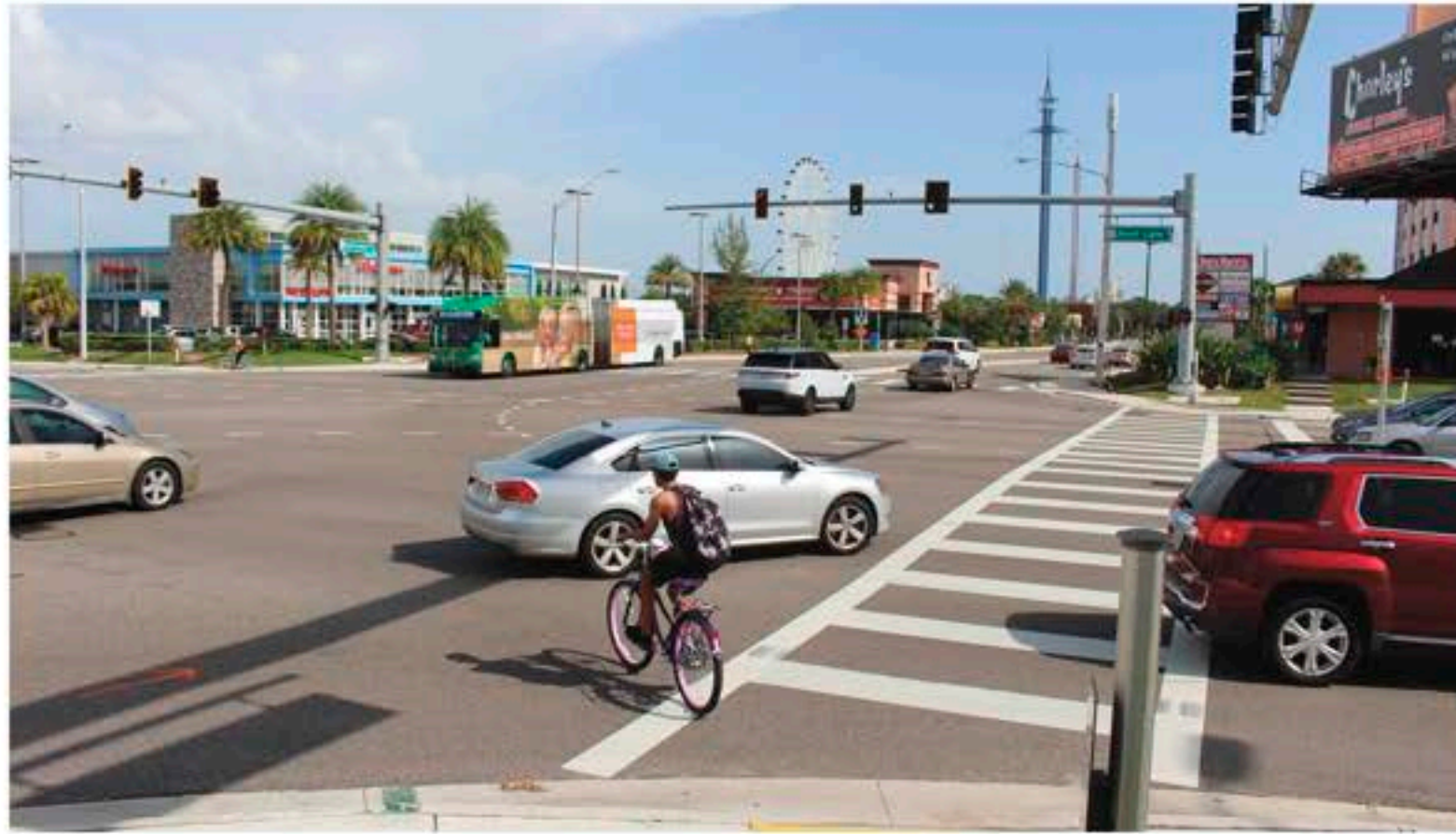
Meeting Number One

Safety

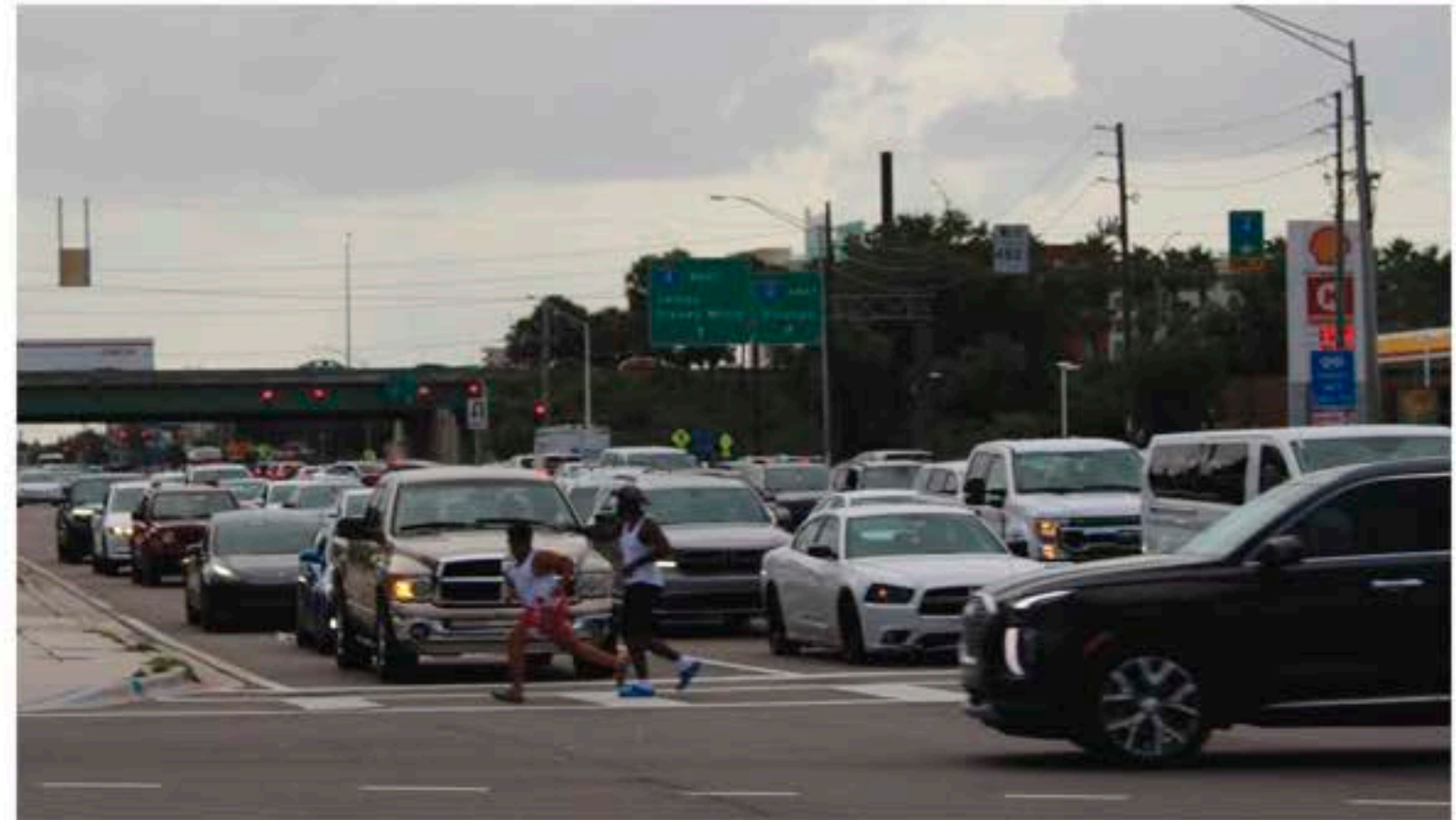


HHCP&AVCON
A JOINT VENTURE

BICYCLE CROSSING WITH CROSSWALK



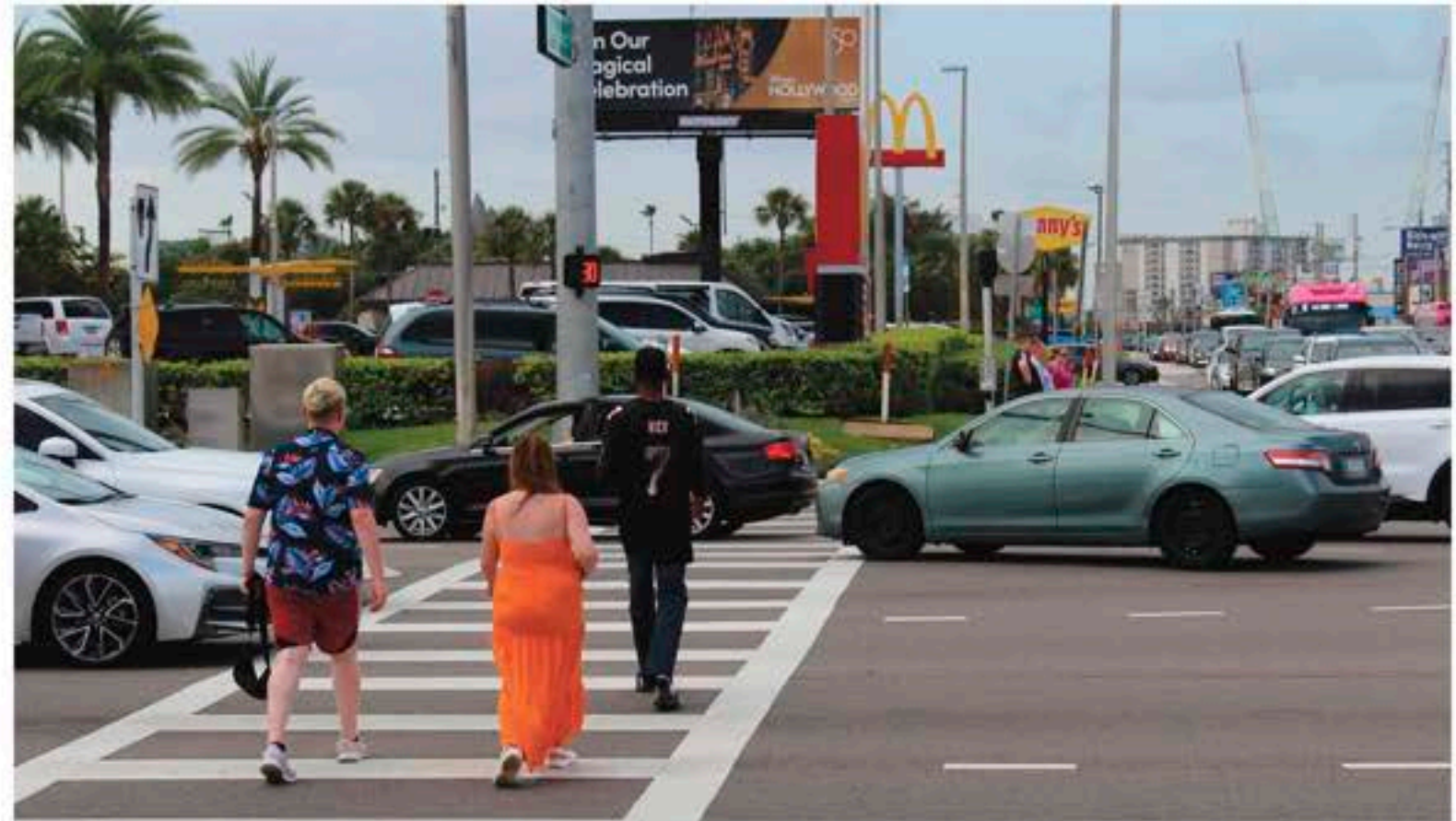
FEELING COMPELLED TO RUN WITH CROSSWALK



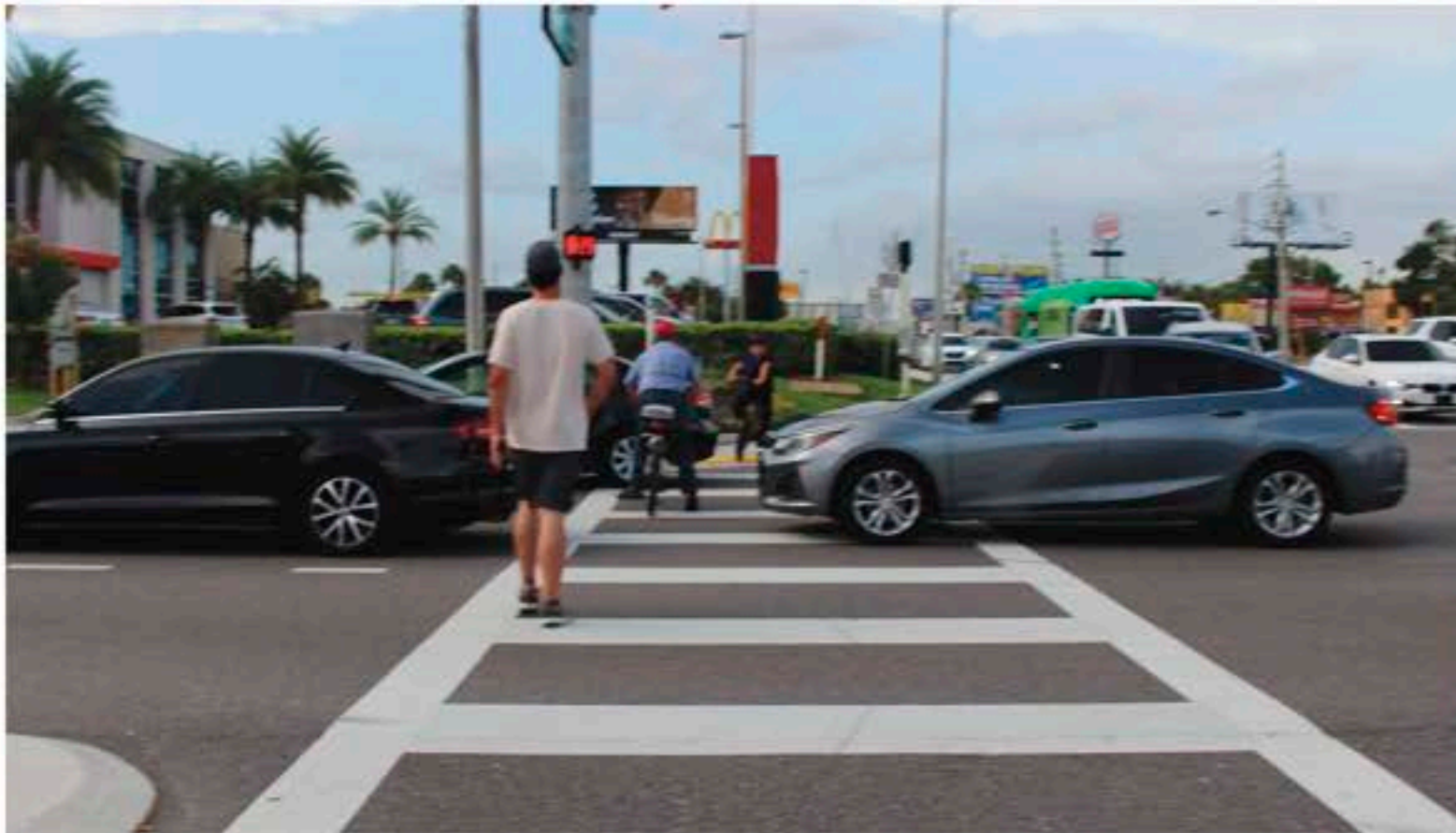
WEAVING THROUGH TRAFFIC IN CROSSWALK



WEAVING THROUGH TRAFFIC IN CROSSWALK



TRAFFIC INTERACTIONS



UNSIGHTED DOUBLE TURN



Why Do We Need to Provide Safety for Pedestrians?

ONE LIFE LOST IS *TOO MANY*



8

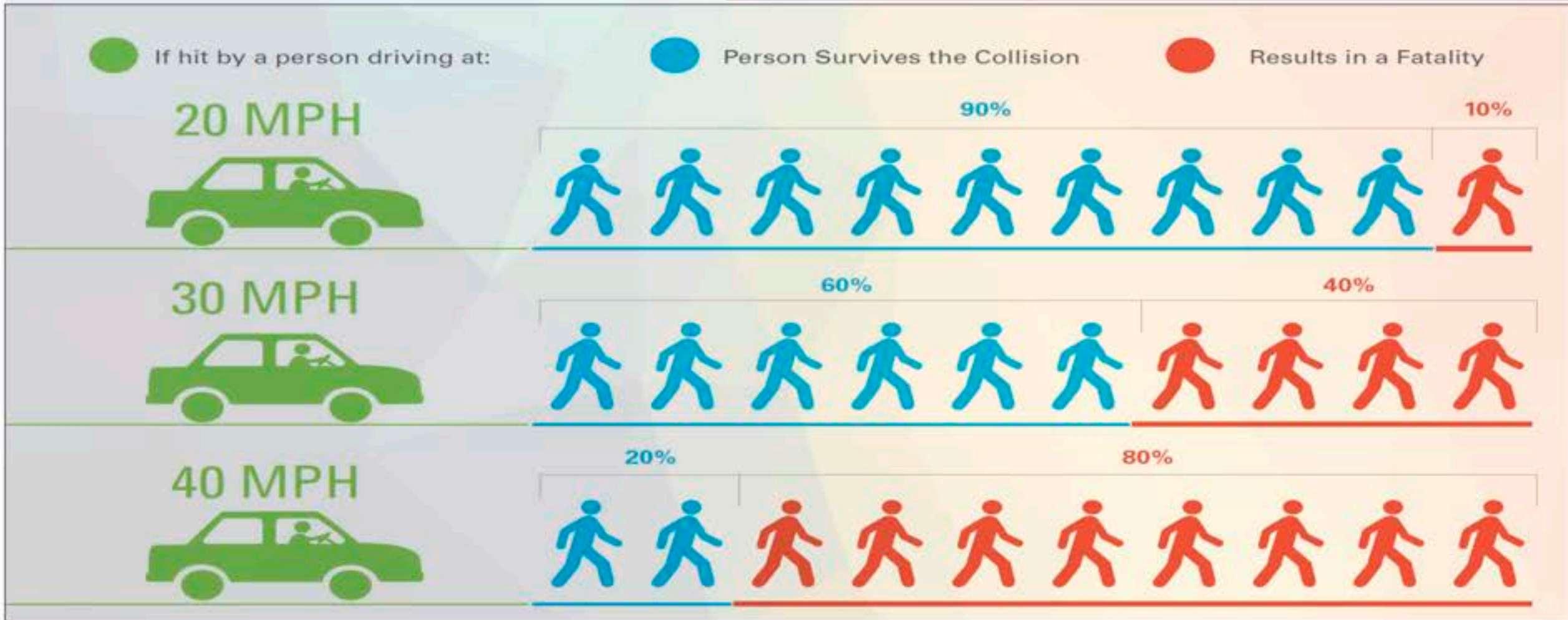
FATALITIES



49

SERIOUS INJURIES

ON FLORIDA'S ROADS *EACH DAY*



60+



SENIORS ARE MORE VULNERABLE AT ANY GIVEN SPEED



Safety

1. Diverging Diamond - Sand Lake Road & I-4 Interchange

2. Design Speed

- A principal design control that regulates the selection of many of the project standards and criteria used to design a roadway project.

3. Posted Speed

- Maximum speed allowed in a speed zone as designated by a sign within the zone.

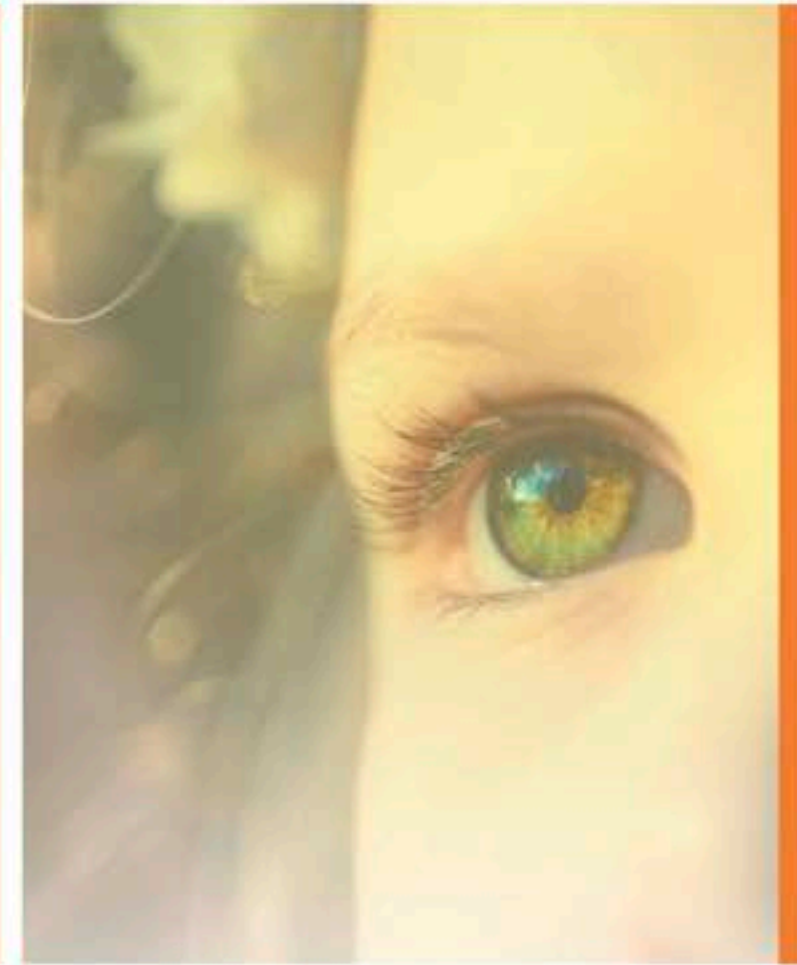


Sand Lake Road Interchange Improvements

4. Target Speed

- Highest speed at which vehicles should operate on a thoroughfare in a specific context, consistent with the level of multi modal activity generated by adjacent land uses, to provide both mobility for motor vehicles and a supportive environment for pedestrians, bicyclists, and public transit users.





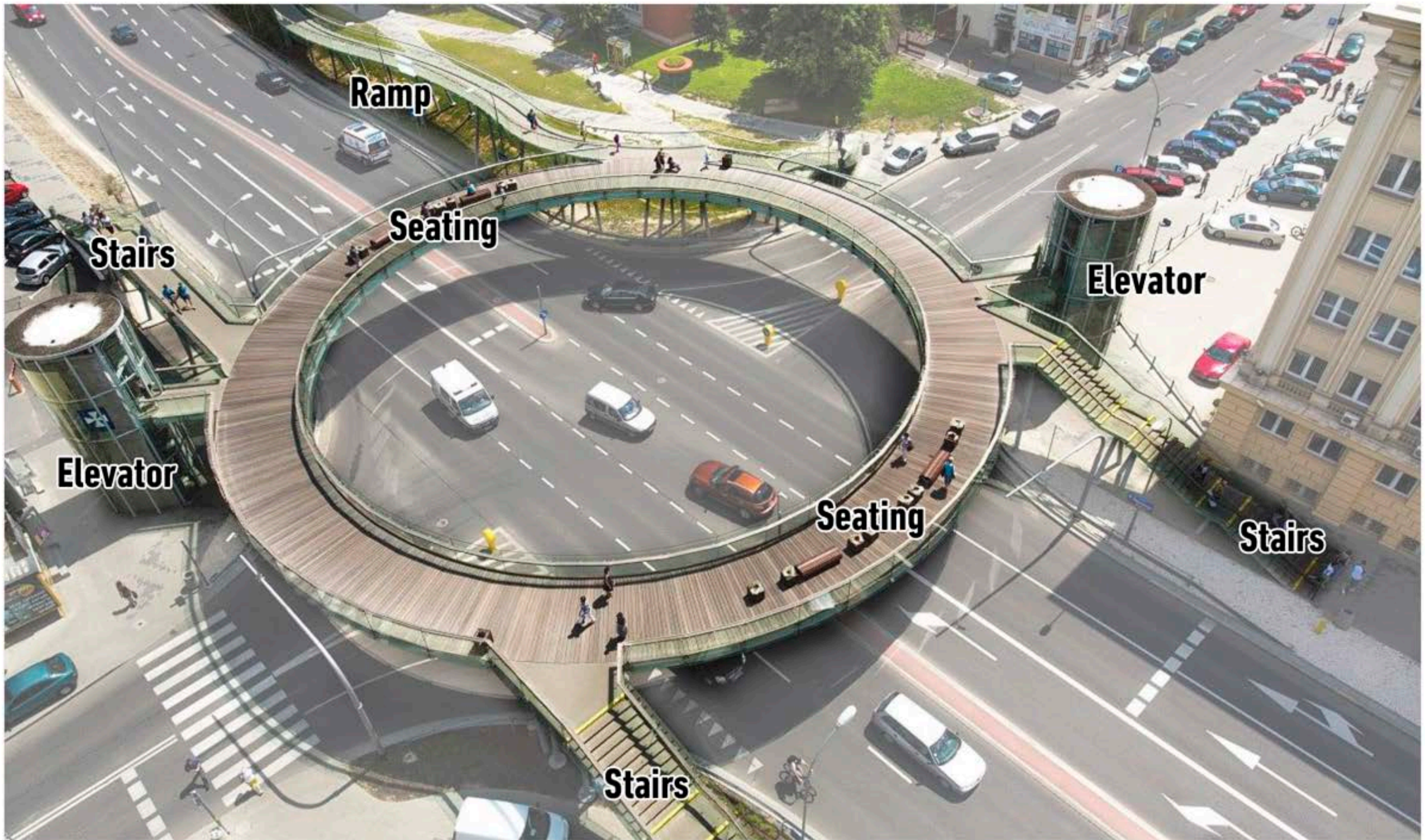
Meeting Number One
Iconic Gateway



HHCP&AVCON
A JOINT VENTURE

Why Do We Want an Iconic Gateway?





HOVENRING

Innovative Circular Cycle Bridge, The Netherlands

Central Support

Unique Supports



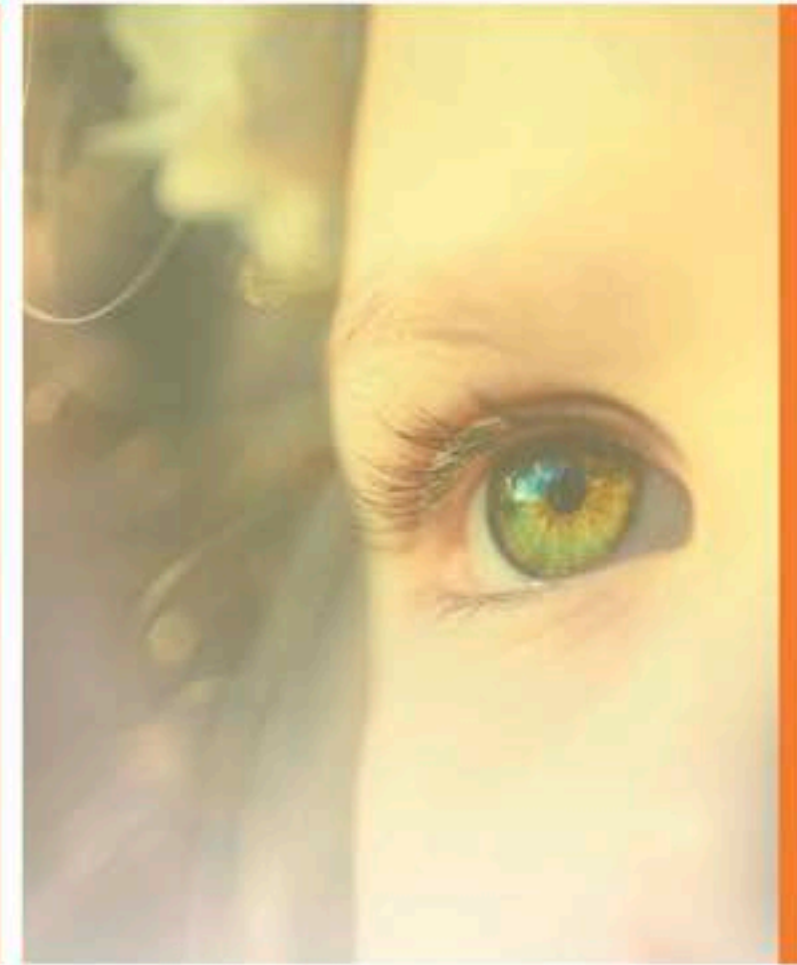
PROJECT ADVISORY GROUP MEETING #1 | STRUCTURAL SUPPORT OPTIONS - HOVENRING - EINDHOVEN, NETHERLANDS

ORANGE COUNTY FLORIDA | INTERNATIONAL DRIVE PEDESTRIAN OVERPASS ANALYSIS AND OVERPASS CONCEPTUAL DESIGN STUDY | #Y20-803-CH

HHCP&AVCON

A JOINT VENTURE





Meeting Number One

Questions and Discussion

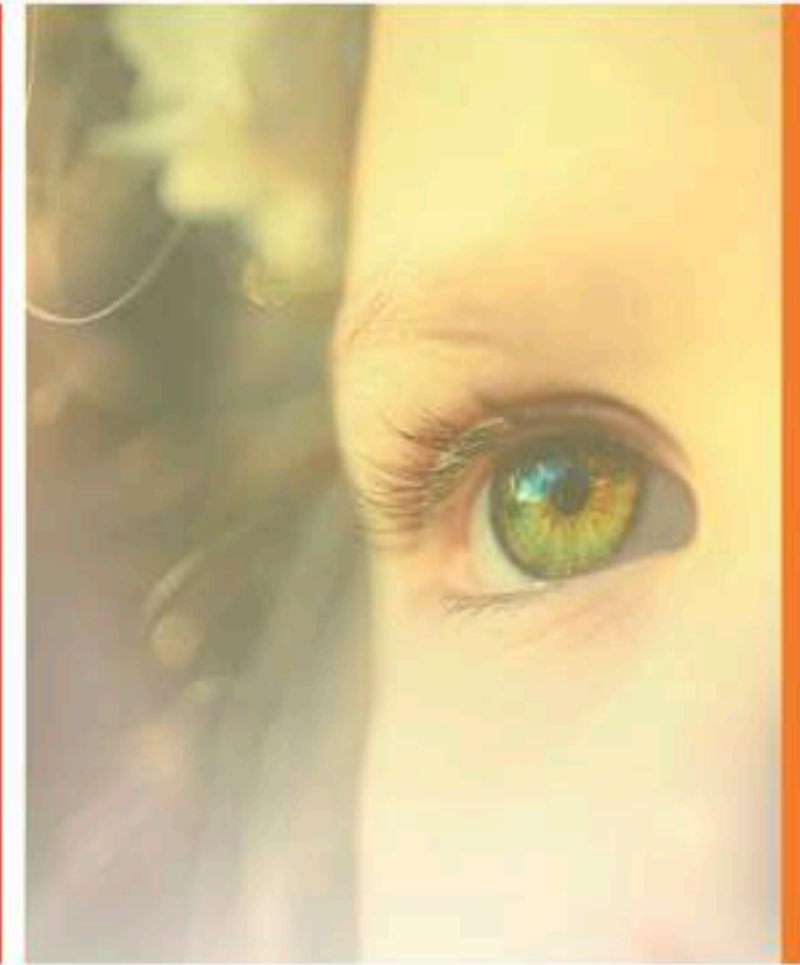


HHCP&AVCON
A JOINT VENTURE

Questions and Discussion

1. **Maintain crosswalk surface crossing or create barrier to on grade crossing?**
2. **Provide a roof for sun/rain protection?**
3. **Options for vertical circulation**
 - Stair + Elevator
 - Stair + Ramp
 - Stair + Escalator + Elevator
4. **Provide space for activities and vendors on the bridge?**
5. **Can the bridge facilitate connection into venues on the corners?**
6. **Can the bridge entry points be moved away from the corner?**
7. **Is there a preference to provide ramps (*280' ramp to rise 20'*)**
8. **Can vertical circulation include elevators? (*which require service and maintenance*)**
9. **Can Audio and Video components be included on the bridge?**
10. **Is it desirable to include a photovoltaic component to the bridge?**
11. **Will there be security required on the bridge? Cameras?**
12. **Will barriers be required at the bridge perimeter (*to prevent trash, falls, etc.*)**
13. **Will FDOT limit lighting elements on the bridge?**





Meeting Number One

Initial Comments from Group Members



HHCP&AVCON
A JOINT VENTURE